

Flame Retardant Nomex®

- ☐ 6 oz **Nomex** EMS SUIT \$309.00
☐ 6 oz **Nomex** FLIGHT SUIT \$309.00
☐ 4.5 oz **Nomex** EMS SUIT \$289.00
☐ 4.5 oz **Nomex** FLIGHT SUIT \$289.00

Two Piece Nomex Suits

- 6 oz Nomex Two Piece FLIGHT SUIT \$339.00
 6 oz Nomex Two Piece EMS SUIT \$339.00
 4.5 oz Nomex Two Piece EMS SUIT \$319.00
 4.5 oz Nomex Two Piece FLIGHT SUIT \$319.00

Poly/Cotton Station Wear

- ☐ **Poly/Cotton** EMS Suit \$219.00
☐ **Poly/Cotton** Flight Suit \$219.00
☐ **Poly/Cotton** Two Piece Suit \$249.00
☐ **Poly/Cotton** Coverall/EMT Suit \$119.00

Flight and EMS price includes: 1 sleeve pocket, 2 breast pockets, 2 front hands pockets, 2 calf pockets, velcro wrists, zippered ankles, and *Either* the two EMS thigh pockets *OR* the three Flightsuit thigh pockets. EMT price includes: two front hands pockets, small 5" x 6" breast pocket, no Velcro or leg zippers.

Pocket Options:

- ☐ Radio/Cell Pocket location? \$12
☐ Substitute radio pocket for left breast pocket n/c
☐ Add pager tab location? \$8
☐ Omit front hands pockets n/c
☐ Internal front hands pockets \$7
☐ Add a right-arm pocket \$15
☐ Move left-arm pocket to right arm n/c
☐ Omit Flap Flightsuit left arm pocket n/c
☐ Swap breast pockets, EMS & Flightsuit n/c
☐ Swap thigh pockets, EMS & Flightsuit n/c
 Specify ☐ right ☐ left **OR** ☐ Both
☐ Omit flightsuit left inner thigh pocket n/c
☐ Add EMS thigh pocket to EMT Suit \$15
☐ Substitute pleated EMS thigh pocket \$5
 Specify ☐ right ☐ left **OR** ☐ Both
☐ Substitute Expanding Ankle pocket \$5
 Specify ☐ right ☐ left **OR** ☐ Both
☐ Hip (wallet) pocket \$5
 Specify ☐ right ☐ left **OR** ☐ Both
☐ Hip (wallet) pocket with Velcro flap \$7 Specify
 ☐ right ☐ left **OR** ☐ Both

Collar Options all at no charge:

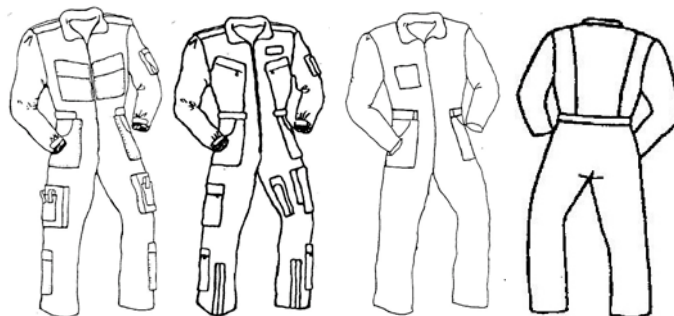
- ☐ Rounded Collar (standard) ☐ Pointy Collar ☐ Stand-up Collar

Other Options:

- ☐ Omit Epaulets n/c
☐ Zip-Off Sleeves \$30
☐ Short Sleeves n/c
☐ Knit Nomex Wrist Cuffs \$11
☐ Velcro Epaulets n/c
☐ Move EMS leg zippers from back to front n/c
☐ Move Flightsuit leg zippers from front to back n/c
☐ Inner Ankle Zippers (splits seam open) \$15
☐ Two-Tone Choose:
 ☐ ¼ - ¾ \$65
 ☐ Diagonal
 ☐ V-Front
 Colors: top- bottom
☐ Pass-Through Pocket \$15
☐ Velcro Patch (name-tag) specify: ☐ Right ☐ Left
☐ Standard Flag specify: ☐ Right Arm ☐ Left Arm
 Flag Color ☐ Gold ☐ White \$3
☐ Sew on Customer provided patches \$1
 Specify ☐ Right Arm ☐ Left Arm

Striping Options:
Price per suit

- ☐ Scotchlite/grosgrain double stripe
 Stripe Color(s):
 Stripe Locations(s) Please check below
☐ Epaulets please specify \$12
 ☐ down the length or ☐ Across the width
☐ Arms (down arms standard) \$24
☐ Across the wrists \$15
☐ Across the length of shoulders \$12
☐ Legs (down legs standard) \$26
☐ Around ankles \$15
☐ Back please specify
 ☐ across the back (standard) OR \$8
 ☐ down both the action pleats \$16
☐ Breast Pockets (across the tops) \$12



EMS suit Flight suit Coverall/EMT Suit Back

Name	
Address	
City State Zip	
Phone	
Email	

These articles are sold without warranty expressed or implied. No representation or warrant is made to these products ability to protect the user from any injury or death. The user assumes the risk and all the responsibility.

Suits USA, Inc. 1219A W. Lebanon St. Mt. Airy, NC 27030 Phone: 800-832-6517 fax 336-789-5667

Email: sales@suitsusainc.com

Web: www.suitsusainc.com